

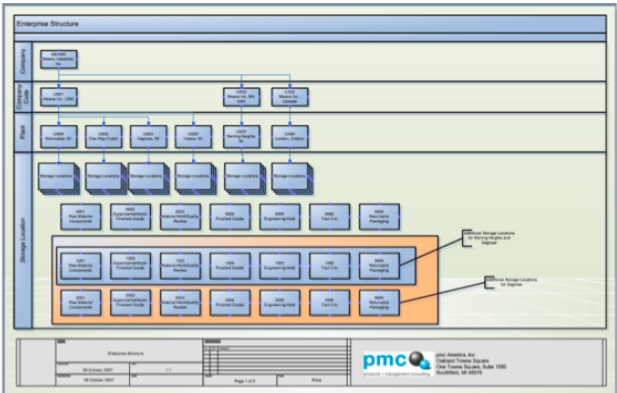
ACHIEVE EXCELLENCE
CREATE VALUE

pmc NAVIGATE

Solution Map:

- Project and Program Management
- Organizational Change Management (KEYSTONE)
- Value Stream Mapping & Accelerators
- Segregation of Duty & Governance Model
- Core pre-configured Best Practices ERP Deployment
- Extended pmc IP & Enhancements
- Continuous Improvement

Sneak Preview: Value Stream Organizational Baseline



The complete SAP All-in-one ERP Business Industry Solution for Automotive Suppliers and Component Manufacturers.

Why is it complete? The solution is offered in a pre-configured format which can be adapted to the individual company. The framework of the solution can be grown dimensionally to enable new functionality and to accommodate new customer demands. But it is not only a functional deployment of SAP processes. The key of every ERP deployment is user acceptance! We have geared our implementation towards early adaption of our solution using our OCM-KEYSTONE method.

Does this apply only for small companies? The answer is no! pmcNavigate has its place whenever you want to implement lean business processes regardless if you are an SME or a Large Enterprise.

You might ask yourself now, "Does this solution help me even when I have already implemented SAP, but I still see business process gaps?" The answer is yes! With our knowledge and this solution we are able to bridge those gaps, too.



SAP® Recognized Expertise
in Automotive

SAP® Certified
Mobile App



Overview	Features	Benefits
<p>Our focus has been in the automotive industry for nearly 2 decades. We have applied automotive concepts to other manufacturing industries over time. That's our sole focus! Therefore we can guarantee that we understand your business and that we truly have a solution which provides you a true value add to your business goals and KPIs.</p>	<p>Project and Program Management: Project Management tools get used throughout every deployment project. We follow an implementation method which we have refined over the last years, which provides operational and strategic KPIs at any moment of the deployment.</p> <p>Organizational Change Management (KEYSTONE): The hardest part within every organization is without a doubt the acceptance of a new system. Our OCM process addresses these concerns and keeps the project on track to be able to achieve the goals set earlier by your management.</p> <p>Value Stream Mapping & Accelerators: Our solution is documented in the form of business process flows including media break and different product families. This provides the perfect starting point for the project – reviewing what we have seen in the past and just spending time on the exceptions. These process flows are a one-to-one mapping of actual configuration in pmcNavigate. Therefore Conference Room Pilots using the actual SAP ERP system will happen right in the beginning of the project. This CPR leads right into the vital SOD (Segregation of Duty) model – the right user with the right authorization doing the right activities in SAP.</p> <p>Segregation of Duty & Governance: User roles and authorization is a topic which typically moves always to the end of a traditional SAP deployment. Not with us! Going into user acceptance testing with the correct SOD model will give you the confidence that your go-live will go smoothly. It also provides you with a great tool going forward onboarding new team members.</p> <p>Core pre-configured Best Practices ERP Deployment: We have spent a lot of time in building and refining our pre-configured templates. These cover all core business processes in SAP and interact with our other solutions, like Scanning, Barcoding, Forms, EDI to name a few. You can expect from this solution pre-configuration for Financials, Controlling, Sales, Outbound Logistics Execution, Procurement, Inbound Logistics Execution, Engineering, Manufacturing and Shop-Floor, Inventory Management, Container Management, and Quality Management.</p> <p>Extended pmcIP & Enhancements: You are not only getting SAP standard configuration – over the years we have developed quite a lot additional tools and enhancements to provide you with additional value add business process and cockpits.</p> <p>Continuous Improvement: Bottom line: We are always there providing you with value add! We never stop improving our solution, therefore you can be certain, that you will be getting the latest and greatest from us. By doing so, you will never stop improving yourself.</p>	<p>OEM Certified</p> <p>Clearly defined scope at a fixed price</p> <p>Accelerated implementation timeline reducing internal resource requirements</p> <p>Maintained through pmc's Center of Excellence</p> <p>Addresses global automotive requirements</p>