

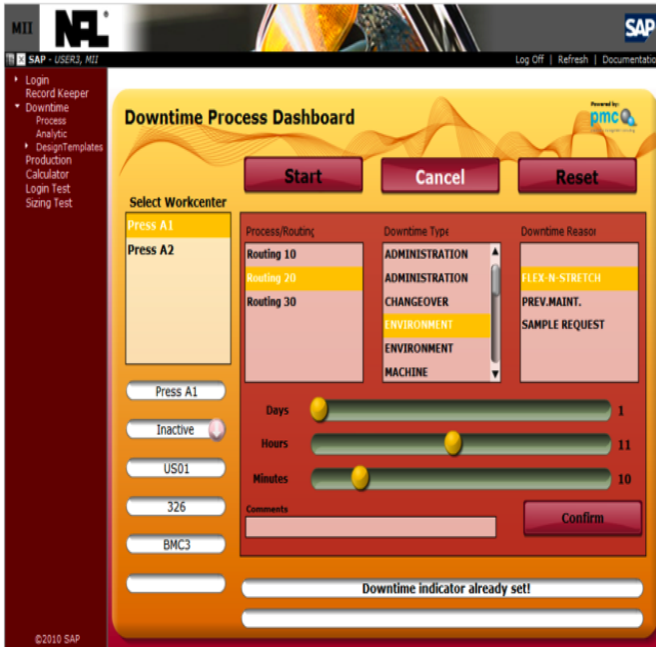
ACHIEVE EXCELLENCE
CREATE VALUE

pmc INTEGRATE

Solution Map:

- Project and Program Management
- Analysis & Business Process Refinement
- PLC & external Sources
- Integration Packages: Activity & Visualization
- Application

Sneak Preview: Downtime Process Dashboard



The Manufacturing Integration and Intelligence solution

Our Manufacturing Integration and Intelligence solution brings you true shop floor visibility by way of connecting to your PLCs, external sources and the extension of your ERP processes down to the vital parts of your business – the shop

floor team members. Our solution is a modular build in the form of templates which can be adjusted based on your specific business process requirements. We are constantly enhancing our templates – currently available are shop floor and warehouse management templates. If you have ideas, we can build specific templates for you.



SAP® Recognized Expertise
in Automotive

SAP® Certified
Mobile App



Overview	Features	Benefits
<p>Having deployed SAP ERP countless times, we recognized early on, that the shop floor users need to have a way to integrate and interact with the backend ERP system, but also make use of the vast data available in your machines, PLCs and external database sources. A modular approach to actual “executing activities” as well as Monitoring and Visualizing the shop floor brings enormous benefits to the whole organization.</p>	<p>Project and Program Management: Project Management tools get used throughout every deployment project.</p> <p>Analysis & Business Process Refinement: Our experts sit together with you and determine the best route of business process refinement. By deploying pmcIntegrate we are looking at your current processes and document them using a value stream method. This provides you with a great tool to implement lean principles in your shop floor.</p> <p>PLC & External Sources: The power lies in the ability to combine data from Machine PLCs or databases as well as the backend ERP system. You have now the ability to distribute electronically the right data at the right time to the shop floor user – no hassle anymore regarding tracking paper forms.</p> <p>Integration Packages: Activity & Visualization: Integration Packages are predefined template frontends to execute activities and get a view of “what is going on?” These templates are highly flexible and modular and can be easily adjusted to your specific business requirements. Currently templates exist for: Production reporting, downtime reporting, scrap reporting, Heijunka Board, Plant Monitoring, various Plant KPIs, Warehouse Picking, Warehouse Putaway, Warehouse Monitoring</p> <p>Application If you currently have SAP as your ERP system, our solution executes directly SAP business process functions in realtime. If you have a legacy ERP system, we can integrate in various forms, like file transfers.</p>	<p>Lower total cost of ownership SAP MII provides real-time connectivity between the shop floor and your ERP system. Prebuilt, standards-compliant connectors significantly reduce initial costs, complexity, and total cost of ownership.</p> <p>Higher productivity for shop-floor personnel The solution aggregates data from multiple systems to deliver useful information to plant employees through alerts, reports, and key performance indicators (KPIs). A single view of analytic information through role-based, configurable dashboards enables fast, accurate decision-making.</p> <p>Continuous improvement in processes and performance SAP MII delivers real-time analytics that enhance manufacturing performance. Production personnel can monitor, measure, and control process-improvement initiatives, including Six Sigma, lean manufacturing, and right-first-time manufacturing.</p> <p>Superior asset usage With SAP MII, you can take advantage of asset-to-asset and plant-to-plant comparisons that enable benchmarking, better asset usage, and rationalization of poorly performing assets.</p> <p>Faster time to value SAP MII can usually be implemented within 90 to 120 days, delivering rapid return on investment.</p>